

Zerowaste SF6 Analyser

emt
Experts in ultrafast SF6
gas analysis and handling



The Zerowaste portable, multi-parameter SF6 gas analyser, brings laboratory performance to the field. With pump back capability to ensure zero waste of SF6.

Switchgear, GIS and other compartments housing SF6 require a specific purity of SF6 to ensure optimal operation and to ensure full quenching of discharges.

The EMT Zerowaste SF6 analyser is designed to provide operators quick, accurate and reliable analysis of SF6 gas for the following applications:

- Ensuring SF6 purity and concentration is inline with OEM guidelines for safe and efficient use of the asset
- Detecting and measuring SF6 breakdown/ decomposition contaminants
- Ensuring safety and wellbeing of operators working with SF6 and its breakdown byproducts

Armed with this data, utilities have a greater understanding of the current and potential long-term condition of their assets.

Reliable analysis allows utilities to better plan maintenance schedules to ensure reduced downtime and unplanned outages.

Features

- Analyse up to 10 gas parameters simultaneously
- Laboratory accuracy in the field
- The lightest “pump back” SF6 analyser only 17Kg / 37.5Lbs
- fully automatic operation – connect and walk away for safe distance operations
- Works on wide operating inlet pressures from 0.1 Bar up to 12 Bar
- ppm SF6 Leak detection option
- Interference free IR sensing technology
- Lower life time costs due to reduced service requirements from IR technology
- Fully portable operation with >10hr battery life
- Fully compliant with all current IEC & CIGRE test methods



For more information or a demonstration contact sales@emt.global or visit www.emt.global

Zerowaste SF6 Analyser

Technical Specification

Gases Measured and Options	Gas	Range	Repeatability
	SF6 Purity	60-100%	+/-0.5% FS ¹
	Dewpoint	-60 - 20°C	+/-0.5°C at -30°C
	HF	0-200ppm	+/-5% FS ¹
	SO2 Hi	0-500ppm	+/-2% FS ¹
	CF4 Lo	0-4000ppm	+/-2% FS ¹
	CF4 Hi	0-60%	+/-1% FS ¹
	CO	0-1000ppm	+/-5% FS ¹
	H2S	0-100ppm	+/-5% FS ¹
	R12	0-250ppm	3% of FS ¹
	AIR	0-50%	1% of FS ¹

FS1: Full Scale (of Measuring Range)

SF6 Leak Detection	Detection Limit	3 gm/year
	Technology	NDIR

Screen	4.3" LCD Touchscreen Interface
--------	--------------------------------

Standard Gas Inlet Pressure	1 to 10 Bar (14PSI to 145PSI)
-----------------------------	-------------------------------

Optional Pressure Capability	0.1 to 12 Bar
	1.4 to 174 PSI

Battery	Operating Time	>10 hours
	Power Supply	100-240V - 50/60Hz

Operating Environmental Conditions	Temperature Range	-20°C to +50°C (-4°F to +122°F)
	Humidity	0-95%RH non-condensing

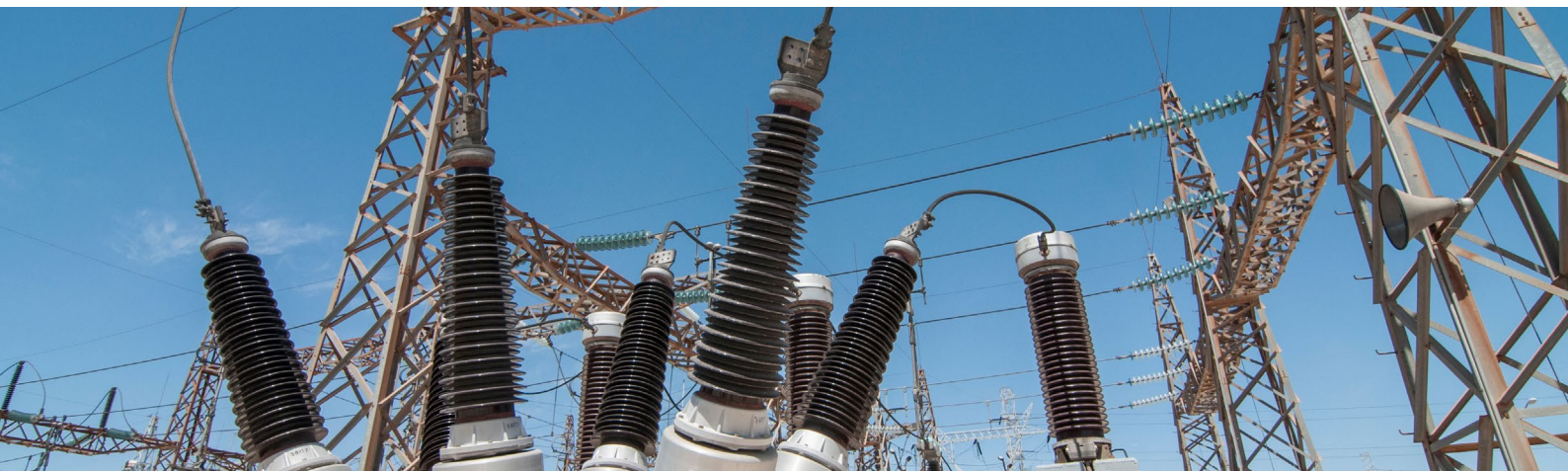
Physical Specifications	Weight	17kg (37.5lbs)
	Maximum Dimensions	L500 x W300 x D470 mm (19.11" x 12" x 18.5")

Datalogging	Type	Exportable as CSV file
	Capacity	1000 results

Hose Purge Option	Pre-sample hose purge to remove latent moisture in sample hose for more accurate H2O measurements
-------------------	---

Leak Detection Probe Option	Detection limit 3gm/year
-----------------------------	--------------------------

CMS Continuous Monitoring System Option	Continuous 24/7 analysis capability for long term asset conditioning
---	--



For details of your local EMT distributor, for further information on our products or to request a demonstration please contact us:

Energy Maintenance Technologies Ltd | Unit 7 Marston Business Park | Lower Hazeldines | Marston Moretaine
| Bedfordshire | MK43 0XT | United Kingdom | Email: sales@emt.global | www.emt.global

